

Referanse

LAMILUX CI-System Lichtband B



Climbing Centre OWL, Brakel

Essential Information

Place / Country:	Brakel, Germany
Year:	2016
Building Type:	Climbing Centre Recreational Facility

Solutions:

**2x LAMILUX Continous
Rooflight B**

with tandem-serial 24 V double flaps for ventilation as well as for smoke and heat extraction

**2x LAMILUX Glass Skylight
FE 100
, ventilated**

**1x LAMILUX Rooflight F100
, ventilated**

The climbing centre in Brakel is a flagship project for the entire region, as it is the largest and most modern climbing centre in the north-east corner of North Rhine-Westphalia. It is possible to climb 15 metres high and up to a difficulty level of 10. Our LAMILUX Continuous Rooflight B gives you the feeling of climbing the sky.

In total, two Continous Rooflights were installed, which are used for daily ventilation as well as smoke and heat extraction in the event of fire. Two Glass Elements and a Rooflight Dome complete the natural daylight incidence.

LAMILUX HEINRICH STRUNZ GMBH

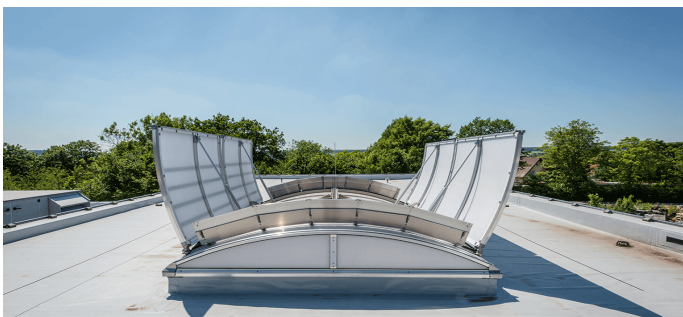
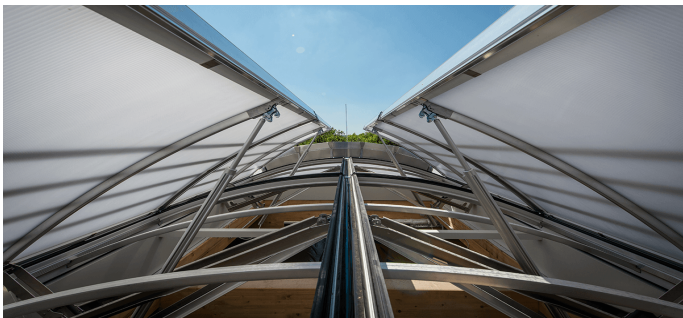
Zehstraße 2 - Postfach 1540 - 95105 Rehau/Tyskland - Tel: +49/(0)92 83/5 95-0 - Fax: +49/(0)92 83/5 95-29 0
E-post: information@lamilux.de - www.lamilux.de

Referanse

LAMILUX CI-System Lichtband B



Climbing Centre OWL, Brakel



LAMILUX HEINRICH STRUNZ GMBH

Zehstraße 2 - Postfach 1540 - 95105 Rehau/Tyskland - Tel: +49/(0)92 83/5 95-0 - Fax: +49/(0)92 83/5 95-29 0

E-post: information@lamilux.de - www.lamilux.de